

# Зип Обществу

## Mod. 61 GX VAPOR ♦ 61 GX VAPOR ♦

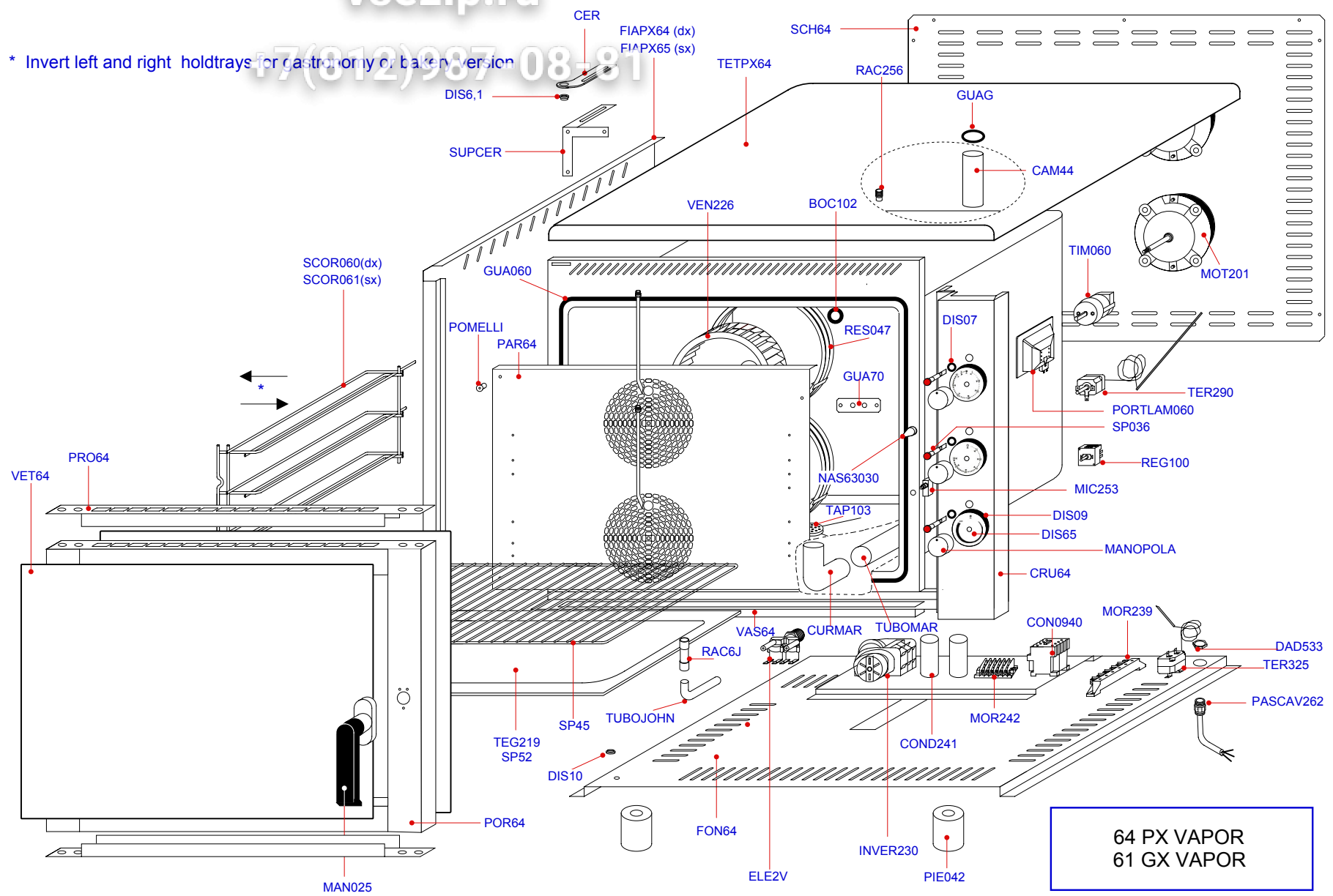
Cod.	Descrizione articoli ♦ Description of items ♦ Description articles ♦ Beschreibung Artikel ♦ Descripción artículos
BOC102	GUARNIZIONE TEFLON ♦ <b>TEFLON GASKET</b> ♦ GARNITURE DE TEFLON ♦ <b>TEFLON DICHTUNG</b> ♦ GUARNICION EN TEFLON
CAM44	SFIATO VAPORI ♦ <b>FUMES VENT</b> ♦ FISSURE DES VAPEURS ♦ <b>DUNST LUFTLOCH</b> ♦ CANERIA POR HUMOS
CER	CERNIERA ♦ <b>HINGE</b> ♦ CHARNIÈRE ♦ <b>SCHARNIER</b> ♦ BISAGRA
CON241	CONDENSATORE 2,5 µF ♦ 2,5 µF <b>CAPACITOR</b> ♦ CONDENSATEUR 2,5 µF ♦ <b>KONDENSATOR</b> 2,5 µF ♦ CONDENSADOR 2,5 µF
CON0940	TELERUTTORE ♦ <b>CONTROL SWITCH</b> ♦ TÉLÉrupteur ♦ <b>SCHEITEL</b> ♦ TELERUPTOR
CRU64	CRUSCOTTO ♦ <b>INSTRUMENT PANEL</b> ♦ BANDEAU DE COMMANDES ♦ <b>BEDIENBLENDE</b> ♦ PANEL DE MANDOS
CURMAR	CURVA 88 GR ♦ <b>CURVE 88 GR</b> ♦ COURBE 88 GR ♦ <b>KNIE 88 GR</b> ♦ CURVA 88 GR
DAD533	DADO NYLON PG16 ♦ <b>NUT NYLON PG16</b> ♦ ECROU NYLON PG16 ♦ <b>MUTTER NYLON PG16</b> ♦ TUERCA NYLON PG16
DIS07	GUARNIZIONE NYLON D 18 ♦ <b>NYLON GASKET D 18</b> ♦ JOINT NYLON D 18 ♦ <b>NYLONDICHTUNG D 18</b> ♦ GUARNICIÓN NAILON D18
DIS09	GUARNIZIONE NYLON D 65 ♦ <b>NYLON GASKET D 65</b> ♦ JOINT NYLON D 65 ♦ <b>NYLONDICHTUNG D 65</b> ♦ GUARNICIÓN NAILON D 65
DIS10	DISTANZIALE D 10 ♦ <b>SPACER D 10</b> ♦ ENTRETOISE D 10 ♦ <b>ABSTANDHALTER D 10</b> ♦ ESPACIADOR D 10
DIS6,1	DISTANZIALE D6,1 ♦ <b>SPACER D 6,1</b> ♦ ENTRETOISE D 6,1 ♦ <b>ABSTANDHALTER D 6,1</b> ♦ ESPACIADOR D 6,1
DIS65	DISCHETTO SERIGRAFATO D 65 ♦ <b>SILK SCREEN PRINTED DISC D 65</b> ♦ DISQUETTE SÉRIGRAPHIÉE D 65 ♦ <b>SERIGRAPHIERTE SCHEIBE D 65</b> ♦ DISCO SERIGRAFADO D 65
ELE2V	ELETTROVALVOLA 2 VIE ♦ <b>SOLENOID VALVE - 2-WAYS</b> ♦ ELECTROVANNE 2 VOIES ♦ <b>MAGNETVENTIL - 2-WEGE</b> ♦ ELECTROVALVULA 2 VIAS
FIAPX64	FIANCO DESTRO ♦ <b>RIGHT SIDE</b> ♦ CÔTÉ DROIT ♦ <b>RECHTE SEITE</b> ♦ LATERAL DERECHO
FIAPX65	FIANCO SINISTRO ♦ <b>LEFT SIDE</b> ♦ CÔTÉ GAUCHE ♦ <b>LINCHE SEITE</b> ♦ LATERAL IZQUIERDA
FON64	FONDO LAMIERA ♦ <b>SHEET BOTTOM</b> ♦ FOND EN TÔLE ♦ <b>BODEN BLECH LÜFTERRADSCHUTZGITTER</b> ♦ BASE PLANCHA
GUA070	GUARNIZIONE PORTA INTERNA ♦ <b>INTERNAL DOOR SEAL</b> ♦ JOINT PORTE INTERNE ♦ <b>DICHTUNG INNENTÜR</b> ♦ BURLETE PUERTA
GUA70	GUARNIZIONE ♦ <b>GASKET</b> ♦ JOINT ♦ <b>DICHTUNG</b> ♦ BURLETE
GUAG	GUARNIZIONE CAMINO - GRANDE ♦ <b>CHIMNEY GASKET - BIG</b> ♦ JOINT CHEMINÉE - GRAND ♦ <b>GROSSE SCHORNSTEINDICHTUNG</b> ♦ GUANICIÓN CHIMENEA - GRANDE
INVER230	TEMPORIZZATORE ♦ <b>TIMER</b> ♦ TEMPORISATEUR ♦ <b>ZEITSCHALTUHR</b> ♦ TEMPORIZADOR
MAN025	MANIGLIA ♦ <b>HANDLE</b> ♦ MANETTE ♦ <b>GRIFF</b> ♦ MANECILLA
MANOPOLA	MANOPOLA ♦ <b>KNOB</b> ♦ MANETTE ♦ <b>BEDIENKNOPF</b> ♦ EMPUÑADURA
MIC253	MICROINTERRUPTORE PORTA ♦ <b>DOOR MICRO-SWITCH</b> ♦ MINIRUPTEUR PORTE ♦ <b>MIKROSCHALTER TÜR</b> ♦ MICROINTERRUPTOR PUERTA
MOR239	MORSETTIERA ALIMENTAZIONE ♦ <b>SUPPLY TERMINAL BOARD</b> ♦ BORNE ALIMENTATION ♦ <b>VERSORGUNGSKLEMMENLEISTE</b> ♦ BORNERA DE ALIMENTACIÓN
MOR242	MORSETTIERA DI DERIVAZIONE ♦ <b>BRANCH TERMINAL BOARD</b> ♦ BORNE DE DÉRIVATION ♦ <b>ABZWEIGUNGSKLEMMENLEISTE</b> ♦ BORNERA DE DERIVACIÓN
MOT201	MOTORE + CONDENSATORE ♦ <b>MOTOR + CAPACITOR</b> ♦ MOTEUR + CONDENSATEUR ♦ <b>MOTOR + KONDENSATOR</b> ♦ MOTOR + CONDENSADOR
NAS63030	NASELLO ♦ <b>NIB</b> ♦ MENTONNET ♦ <b>NASE</b> ♦ PUNTA
PAR64	PARAVENTOLA ♦ <b>FAN COVER</b> ♦ PROTECTION DU VENTILATEUR ♦ <b>WINDSCHUTZ</b> ♦ PROTECCIÓN VENTILADOR
PASCAV262	PASSACAVO ♦ <b>CABLE GUIDE</b> ♦ PASSE CABLE ♦ <b>KABEL FÜRHRUNG</b> ♦ AISCADOR PASAPANEL
PIE042	PIEDINO ♦ <b>FOOT</b> ♦ PIED ♦ <b>FUSS</b> ♦ PIE
POMELLI	POMELLO ♦ <b>KNOB</b> ♦ POMMEAU ♦ <b>KNAUF</b> ♦ TIRADOR
POR64	PORTA ♦ <b>DOOR</b> ♦ PORTE ♦ <b>TÜR</b> ♦ PUERTA
PORTLAM060	PORTALAMPADA ♦ <b>LAMPHOLDER</b> ♦ PORTE-LAMPE ♦ <b>LAMPENFASSUNG</b> ♦ PORTALÁMPARAS
PRO64	PROFILO PORTA ♦ <b>DOOR PROFILE</b> ♦ PROFIL PORTE ♦ <b>TÜRRAHMEN</b> ♦ PERFIL PUERTA
RAC256	RACCORDO INTERMEDIO ♦ <b>INTERMEDIATE CONNECTION</b> ♦ RACCORD INTERMÉDIAIRE ♦ <b>INTERMEDIÄRES VEBINDUNGSGLIED</b> ♦ CONEXIÓN INTERMEDIA
RAC6J	RIDUZIONE INTERMEDIA ♦ <b>INTERMEDIATE REDUCTION</b> ♦ REDUCTION INTERMÉDIAIRE ♦ <b>INTERMEDIÄRES UNTERSETZUNGSGETRIEBE</b> ♦ REDUCCIÓN INTERMEDIA
REG100	REGOLATORE DI ENERGIA ♦ <b>ENERGY REGULATOR</b> ♦ RÉGULATEUR D'ÉNERGIE ♦ <b>ENERGIEREGLER</b> ♦ REGULADOR DE ENERGIA
RES047	RESISTENZA 4000W V230 ♦ <b>RESISTOR 4000W V230</b> ♦ RÉSISTANCE 4000W V230 ♦ <b>WIDERSTAND 4000W V230</b> ♦ RESISTENCIA 4000W V230
SCH64	SCHIENA ♦ <b>BACK</b> ♦ DOS ♦ <b>RÜCKENTEIL</b> ♦ TRASERA
SCOR060	GRIGLIA LATERALE DESTRA ♦ <b>RIGHT SIDE GRILL</b> ♦ GRILLE LATÉRALE DROITE ♦ <b>RECHTES SEITLICHES GITTER</b> ♦ REJILLA LATERAL DERECHA
SCOR061	GRIGLIA LATERALE SINISTRA ♦ <b>LEFT SIDE GRILL</b> ♦ GRILLE LATÉRALE GAUCHE ♦ <b>LINKES SEITLICHES GITTER</b> ♦ REJILLA LATERAL IZQUIERDA
SP036	SEGNALATORE ROSSO ♦ <b>RED INDICATOR</b> ♦ SIGNALÉUR ROUGE ♦ <b>ROTE LEUCHTANZEIGE</b> ♦ INDICADOR ROJO
SP45	GRIGLIA IN ACCIAIO 1/1 GN ♦ <b>STEEL GRILL 1/1 GN</b> ♦ GRILLE EN ACIER 1/1 GN ♦ <b>STAHLGITTERROST 1/1 GN</b> ♦ PARRILLA DE ACERO 1/1 GN
SP52	TEGLIA 1/1 GN H20 ♦ <b>BAKING-PAN 1/1 GN H20</b> ♦ PLATEAU 1/1 GN H20 ♦ <b>BACKFORM 1/1 GN H20</b> ♦ BANDEJA 1/1 GN H20
SUPCER	SUPPORTO CERNIERA ♦ <b>HINGE SUPPORT</b> ♦ SUPPORT CHARNIERE ♦ <b>STÜTZE ZUM SCHARNIER</b> ♦ SOPORTE BISAGRA
TAP103	TAPPO ♦ <b>CAP</b> ♦ BOUCHON ♦ <b>VERSCHLUSS</b> ♦ TAPÓN
TEG219	TEGLIA (60X40 H20) ♦ <b>TRAY (60X40 H20)</b> ♦ BAC (60X40 H20) ♦ <b>BACKFORM (60X40 H20)</b> ♦ BANDEJA (60X40 H20)
TER290	TERMOSTATO ♦ <b>THERMOSTAT</b> ♦ THERMOSTAT ♦ <b>THERMOSTAT</b> ♦ TERMOSTATO
TER325	TERMOSTATO SICUREZZA ♦ <b>SAFETY THERMOSTAT</b> ♦ THERMOSTAT DE SÉCURITÉ ♦ <b>SICHERHEITSTHERMOSTAT</b> ♦ TERMOSTATO DE SEGURIDAD
TETPX64	COPERCHIO ♦ <b>COVER</b> ♦ COUVERCLE ♦ <b>DECKEL</b> ♦ TAPA
TIM060	TEMPORIZZATORE 60' ♦ <b>TIMER 60'</b> ♦ TEMPORISATEUR 60' ♦ <b>ZEITSCHALTUHR 60'</b> ♦ TEMPORIZADOR 60'
TUBOJOHN	TUBO TRASPARENTE ♦ <b>TRASPARENT TUBE</b> ♦ TUBE TRASPARENT ♦ <b>DURCHSICHTIGES ROHR</b> ♦ TUBO TRASPARENTE
TUBOMAR	TUBO ♦ <b>TUBE</b> ♦ TUYAU ♦ <b>ROHR</b> ♦ TUBO
VAS64	VASCHETTA ♦ <b>BOWL</b> ♦ BOL ♦ <b>SCHALE</b> ♦ VASIJA
VEN226	VENTOLA ♦ <b>FAN</b> ♦ VENTILATEUR ♦ <b>LÜFTERRAD</b> ♦ VENTILADOR
VET64	CRISTALLO ESTERNO/INTERNO ♦ <b>EXTERNAL/INTERNAL PLATE GLASS</b> ♦ VITRE EXTERNE/INTERNE ♦ <b>AUSSENGLAS/INNENGLAS</b> ♦ CRISTAL EXTERNO/INTERNO

Зип Ощепит

vsezip.ru

7(812)987 08-81

\* Invert left and right holdtrays for gastronomy or bakery version



64 PX VAPOR  
61 GX VAPOR